



ASPIRE

— TO MOVE —



Rivers Street, Bath, BA1

Video and physical viewings. Top floor, two bedroom flat, available to rent from the 18th August, located in a desirable area of Bath. Including two double bedrooms and a stunning view of the city. Very close to local amenities, cafes and restaurants. Within a short walk of The Royal Crescent and Circus.

Rivers Street is located north of Bath City centre, just 0.3 miles from Milsom Street. There are local shops on Julian Road, 0.1 miles away which include a Co-op.

£1,500 PCM

Rivers Street, Bath, BA1

- Video viewing available
- Two double bedrooms
- Council tax band C
- City centre location
- Rivers Street
- Available 18th August
- Fantastic views
- Close to local amenities
- Holding deposit: £346

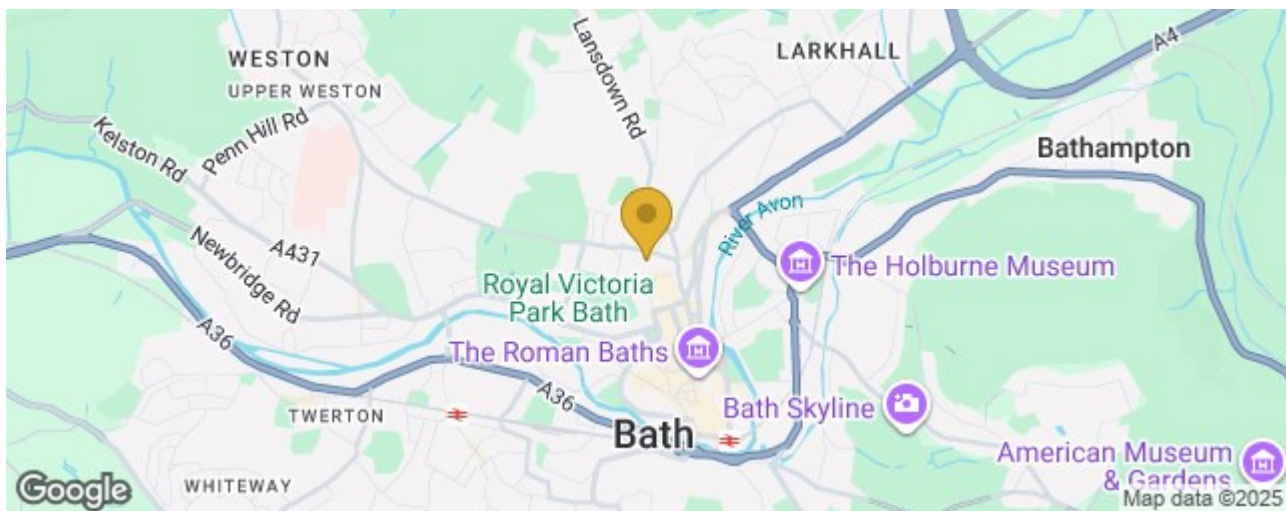
Video and physical viewings. Top floor, two bedroom flat, available to rent from the 18th August, located in a desirable area of Bath. Including two double bedrooms and a stunning view of the city. Very close to local amenities, cafes and restaurants. Within a short walk of The Royal Crescent and Circus.

Rivers Street is located north of Bath City centre, just 0.3 miles from Milsom Street. There are local shops on Julian Road, 0.1 miles away which include a Co-op.

The property is located on the top floor and is accessed via the third floor. The living accommodation comprises of entrance hallway with cupboard, ideal for storage and is where the boiler is located. The kitchen has base and wall units, cooker, gas hob, extractor and integrated fridge/freezer, washing machine and slimline dishwasher. The living room is open plan to the kitchen and benefits from natural light and fantastic views via three windows over looking the city of bath. The living area has a feature fireplace and shelving for storage. The main bedroom is a big double and has integrated storage and the second bedroom could be used as a spare double bedroom or study. The shower room has shower cubicle, WC and sink.

The property is available from the 18th August and is offered unfurnished. The property would best suit professionals.

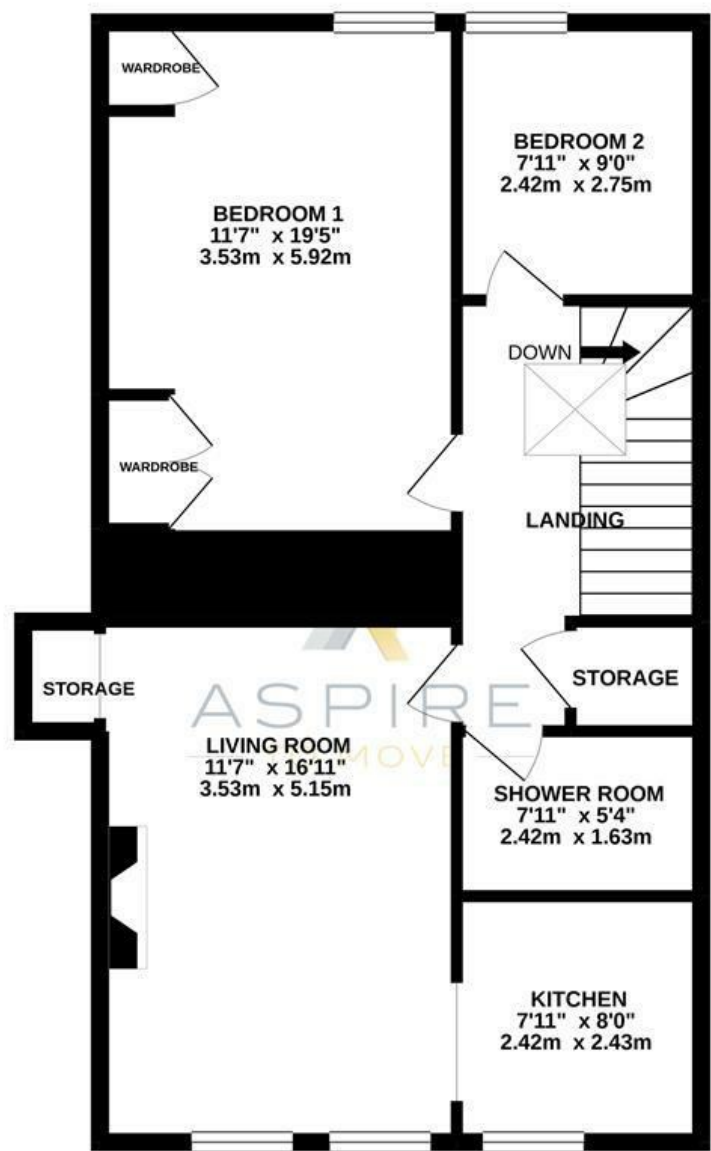
Council tax band C: £1968.48





Floor Plan

TOP FLOOR
680 sq.ft. (63.2 sq.m.) approx.



RIVERS STREET, BATH, BA1

TOTAL FLOOR AREA : 680 sq.ft. (63.2 sq.m.) approx.

Whilst every attempt has been made to ensure the accuracy of the floorplan contained here, measurements of doors, windows, rooms and any other items are approximate and no responsibility is taken for any error, omission or mis-statement. This plan is for illustrative purposes only and should be used as such by any prospective purchaser. The services, systems and appliances shown have not been tested and no guarantee as to their operability or efficiency can be given.

Made with Metropix ©2021

These particulars, whilst believed to be accurate are set out as a general outline only for guidance and do not constitute any part of an offer or contract. Intending purchasers should not rely on them as statements of representation of fact, but must satisfy themselves by inspection or otherwise as to their accuracy. No person in this firms employment has the authority to make or give any representation or warranty in respect of the property.

